

---

Villa

*Wireless Video Door Phone*

User Manual



# Contents

---

Introduction.....	3
Features.....	4
Information of all parts.....	5
Outdoor Camera.....	5
Indoor Monitor.....	6
Display show .....	8
Operation instructions.....	9
Installation instructions.....	11
Part of power adapter.....	13
Part of the battery.....	13
Specifications and parameters.....	14
Working Environment.....	15
Maintenance of devices.....	15
Matters need to be noticed.....	15
Failure diagnosis.....	16
Accessories.....	17
Technology support and service.....	18

**【Remark】** All the pictures and screen display shown in this manual are somewhat different from actual product for advanced version of our product and different production ,as a result , this manual is only for presentating the operation of our product in detail. Please take actual devices as standard product .

## Technical support and services

①We insist tracking service through foresale ,sale and postsale , please carefully read the user manual before installation;

②Please follow the user manual for correct installation and testing, if there is any doubt please call our tech-supporting and customer service center.

【 Remark 】 (1)Our company applies ourselves to reformation and innovation of our products . No extra informing for any change. The illustration shown here only used for reference , if there is any difference please take the actual product as standard product.

**(2) Our company reserves the final right of interpretation of the production , any problem of the quality , please feel free to return it to us !**

**No company and individual has the right to tear up the label of this product without permission.**

**Or you should be responsible for your action.**

## Introduction :

This product adopts 2.4GHz digital audio and video wireless transmission principle,outdoor unite takes pictures and indoor screen display , bilatarel intercom. The monitor has the remote unlock function and can monitor the outdoor situation at any time , the advanced infrared-assisted lighting features , so you can identify the night-visitors.With fashionable and fresh appearance , clear viewing, easy to install , adding one more scientific protection for your family , this is absolutely an ideal security product for modern families.

For better taking advantage of the prior functions please carefully read our instruction for correct installation and operation.

【 Remark 】 :This manual is suit for the kit with one camera matching one monitor instead of one camera matching multiple monitors.

## Features



① 2.4GHz lauch frequency , access remote control distance is between 120-180m;



② With micro-processing technology,auto-remote control , excellent performance and high reliability;



③ The TFT 2.4" digital color LCD for monitor;

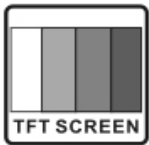
④ CMOS 300,000 pixel for camera;

⑤ Clear night-viewing; 24 hours monitoring , calling , speaking and unlocking remote controlling etc;



⑥ One monitor can support 6 pcs of cameras at most,for further information,please contact the salesman;

⑦The mini USB data output for monitor built-in high capacity rechargeable Lithium battery;



⑧The monitor can take/save/view more than 200 pcs of photos automatically;



image	If there is other strong magnetic space bother?	Put the indoor device out of the strong magnetic space
	If there is unrecognized code for the time display?	Press the Unlock key for 5 seconds

## 13. Accessories

- Indoor Monitor 1PCS Outdoor Camera 1PCS
- 12V/1A Power 1PCS 5V/1A Power 1PCS
- Screw 4PCS Electric wire for E-lock 1PCS

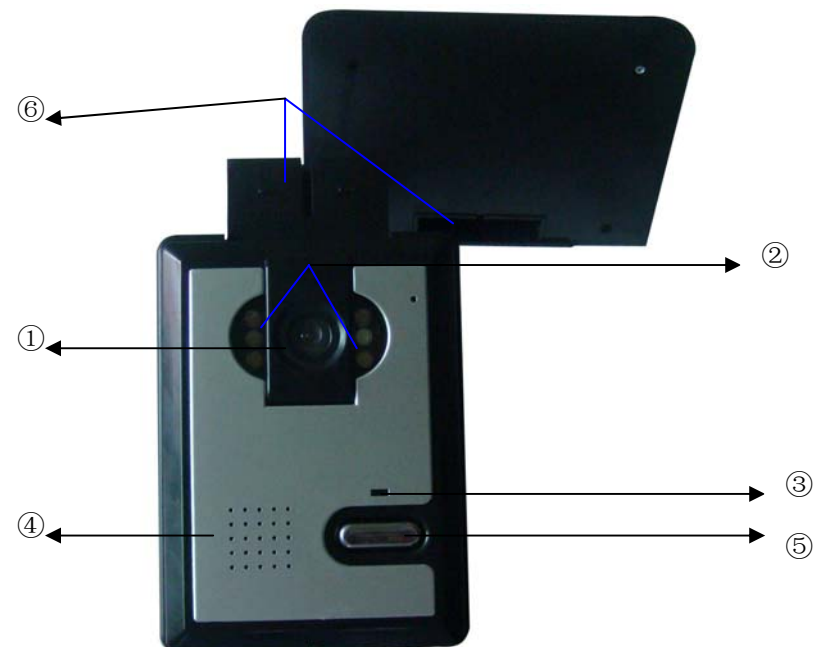
**【Remark】** The E-lock isn't the accessory

fault repair, please contact the distributor or the company's technology department.

## 12. Failure diagnosis

Defec	Judgement	Operation
Unable to start the product	If turn the switch to the "ON"?	Turn the switch to the ON
	If the power of Li-ion batteries is not enough?	To charge the li-ion batteries
	If connect the power adaptor?	To connect the power adaptor
Unable to charge	If the plug of power adaptor correctly plug into the charging slot?	Re-connect the devices and power adaptor
	If the power adapter has been connected to the 110-240V AC?	Re-insert the plug so that power supply connected to AC power adapter
Speaking state no voice	If the volume is adjusted to be the least?	To adjust the volume to be suitable
The image is flashing or noise	If the indoor device is close to TV set , fluorescent lamps , mobile phone , which has electronical and magnetic wave?	Keep the devices off these things which has electronical and magnetic wave
The indoor video phone shows no signal	If the outdoor phone doesn't connect the power?	To connect the outdoor device power
	If the outdoor phone is far away from the indoor phone?	Keep the distance within 60 meters (with multi-wall barrier case)

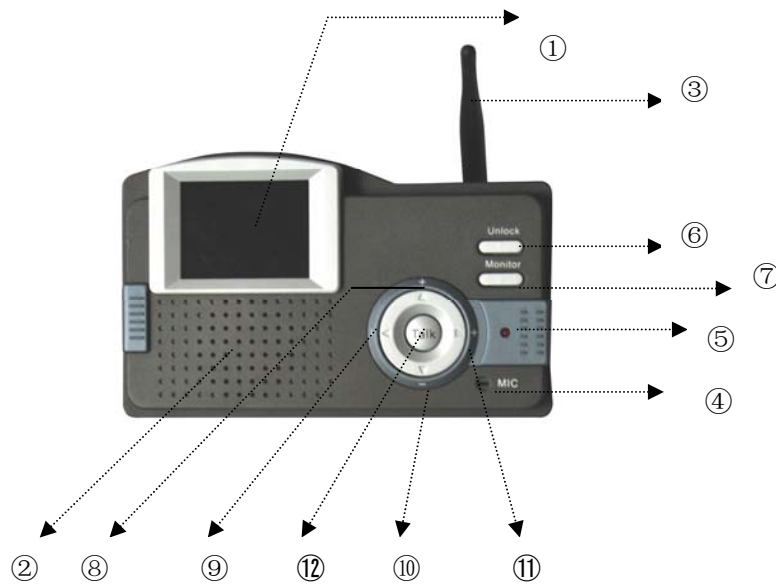
## 1. Outer camera



Introduction of key and accessories:

- ① camera (capture the outer photos and vistsors )
- ② night-view illuminance (clearly view the vistor at night)
- ③ state indicating light(only for outer camera with battery,the light is on ,it's being charged , the light is off, charging is over.)
- ④ loud speaker (hear the host inside by the loud speaker)
- ⑤ calling key (by this key calling inside device and auto-start the camera)
- ⑥ socket of water-proof cover

## 2. Indoor monitor



All parts and button instruction:

- ① TFT LCD display (to show the image of visitor)
- ② Speaker (to hear the Dingdong calling and the voice of the visitor)
- ③ Antenne(to transfer the signal of voice , unlock to the camera,at the same time receive the signal of voice,image and call from the camera )
- ④ Micro-phone(to convey the visitor's voice to the camera)
- ⑤ LED: the indicator light(if the light is on ,it stands for charging but on the contrary it indicates charging is over )
- ⑥ Unlock(to control the camera and release the E-lock)

## 9. working environment

- ①Working temperature -25°C—+50°C
- ②Working humidity range: less than 85%

## 10. Maintenance of devices

- ①Keep the clearance of the surface and use the soft dry cloth to clean the dust of the product,
- ②Please turn off the power of indoor unit when clean the indoor device,
- ③If there is hard dirty which cannot be cleaned with dry cloth, please use the soft towel dipped in the neutral diluted detergent to clean the machine and then clean it with dry cloth,
- ④Do not use benzene, thinner or organic solvents such as gasoline to clean, these solvents may cause damage to the machine casing or the surface of the machine and change colors.

## 11. Matters need to be noticed

- ①The product should be placed where is stable , windy , air-dry, non-sunshine ,non strong magnetic and non-dusty;
- ②Don't clean the surface with chemicals but with soft and clean dry cloth;
- ③Don't press several buttons at the same time;
- ④The outdoor and indoor unit must be matched with appointed specified models and cannot match with others that are not our products.
- ⑤Do not disassemble the machine without authorization, if the need for

## 8. Specifications and parameters

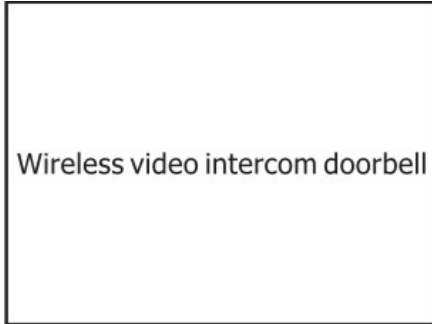
Outdoor extension		Indoor extension	
Power Supply	Input:AC 100-240V 50/60Hz Output: DC 12V 1A	Power Supply	Input:AC 100-240V 50/60Hz Output: DC 5V 1A
Camera	CMOS 300,000 pixels	Screen specifications	2.4" TFT 320x240
Light Source	6 LED lights	Battery	3.7V 1200mAh Li-Ion Battery
Power consumption	Standby:0.2W Unlock:12W	Power consumption	Standby:0.1W Work:2W
Modulation	GFSK	Modulation	GFSK
Frequency	2.4GHz	Frequency	2.4GHz
Transmitting power	17dBm	Transmitting power	17dBm
Channel numbe	64	Channel number	64
Size(mm)	125x93x33	Size(mm)	162x100x50
		Charging time	3 hours
		Standby time	6 days

- ⑦ Monitor: Monitor / view photos (to start monitor and monitor the outdoor circumstance / view the photos taken by the camera)
- ⑧ Brightness+: (to enforce the brightness of images / photo up/ time+ )
- ⑨ Volume-: (turn down the volume/ time-adjustment)
- ⑩ Brightness-: (turn down the brightness of images/ photo down/ time-)
- ⑪ Volume+: (turn on the volume /time-adjustment )
- ⑫ Talk: (talk to the outdoor unit)



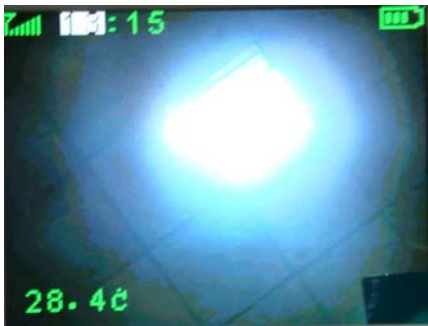
- ① Mini USB delivery for charge and output/input .
- ② power switch

### 3. Display show:



#### 1. Image of starting

Turn the power switch to ON and the screen display this image for 2 seconds, while speakers sounds "ding dong," indicates the machine started and enter the standby mode. When goes into standby state, the system automatically turn off the screen



#### 2. The picture of time adjustment

When it's standby, press left / right to enter time adjustment screen, press the left/right/ up/down key on the menu to adjust the time freely, it also shows the temperature outdoor.



#### 3. Image of volume adjustment

To adjust the brightness of screen freely by the up/down key on the menu while it's working!  
adjusting range: 0-9

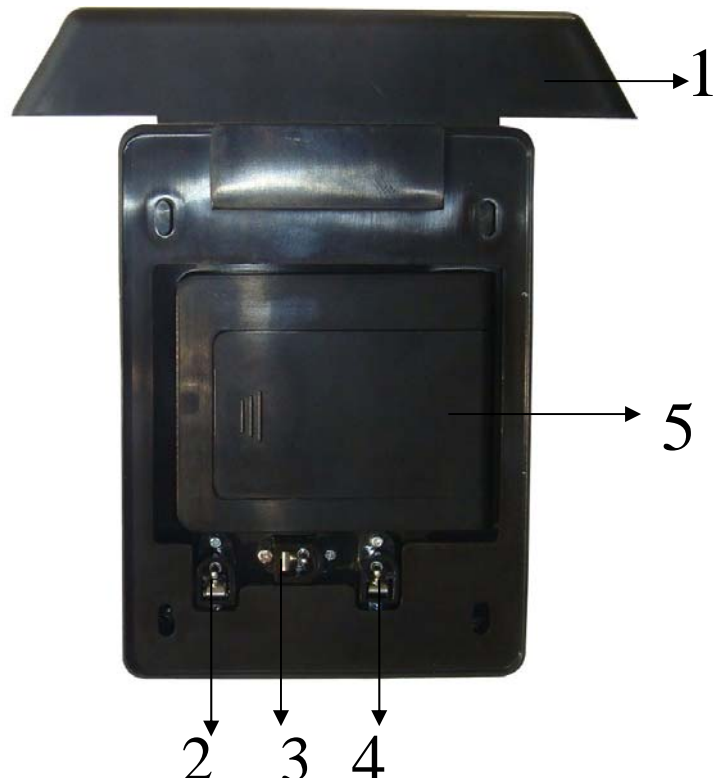
### 6. Part of power adapter

- ①The outdoor unit power supply: 12V/1A(DC transformer)
- ②The indoor unit power supply: 5V/1A(DC transformer)
- ③Please use the appointed or same specification (same rate voltage and current) power adaptor, the nonspecified power adaptor may damage the circuits and components inside;

### 7. Part of the battery

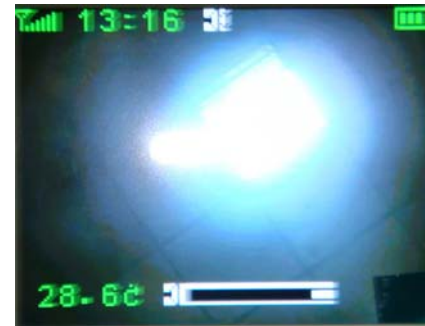
- ①The monitor built-in high capacity rechargeable Lithium battery, the indoor unit should be placed in a well-ventilated, cool and place without direct sunlight;
- ②The battery is easily-consumed product with limited life, if repeatedly charging or discharging in working state will shorten its life;
- ③New product should be charged for 2-3 hours each time.

The back of outdoor phone

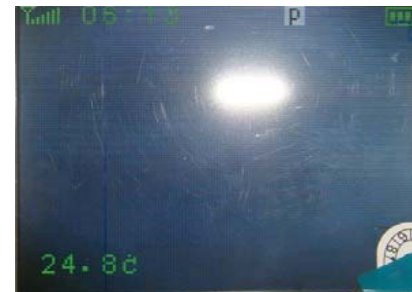


Among them:

- (1) the water-proof cover
- (2) the power socket
- (3) The socket of switch signal-control lock
- (4) The socket of voltage signal-control lock
- (5) the sock of battery-installation



4. Image of volume adjusting  
To adjust the volume by the left/right key on the menu while it's working. adjusting range: 0-9



5.Photoing  
Press monitor key for 3s and it shows P entering the photo-taking mode, capturing the outer things by pressing talking key, the pictures are stocked in inside device and can be reviewed .



6.Monitoring  
Stand-by mode, press the monitor key for 1s showing "little eye"mark, it enters monitor mode, and monitoring last for 24h, the outer device cannot perceive inside circumstance. Providing temperry cheing but without video stock

#### 4. Operation instructions:

Please connect the E-lock with power as the manual instructed ,connect the power of the camera and turn on the monitor. Then press the Monitor for 1 second to turn on the outdoor monitoring image, adjust it to the best state by adjusting the brightness, the specific operation is as follows:

##### 1) Operation of the doorphone

The visitor presses the call button of the camera ,the monitor will sounds and show the image of visitor .If the host answers , press the Talk to speak to the visitor, press the Unlock to release the door while intertalking, if the host doesn't press Talk ,he can hear the voice of the visitor ,however,the visitor cannot be conscious of the circumstances inside .Press the Unclock key to release the door ;if the host isn't in or doesn't go on with more operation after 30 seconds the monitor screen will shut off and save the image of outdoor automatically.

##### 2) The operation of the monitor

If there is no calling from the camera,the user has to monitor the outdoor circumstance through the indoor monitor, pressing the Monitor button for 1 second to get into 24H monitoring .Press Talk to speak,press it again can start the E-lock , press Unlock to release the door and press Monitor to shut off the image screen.

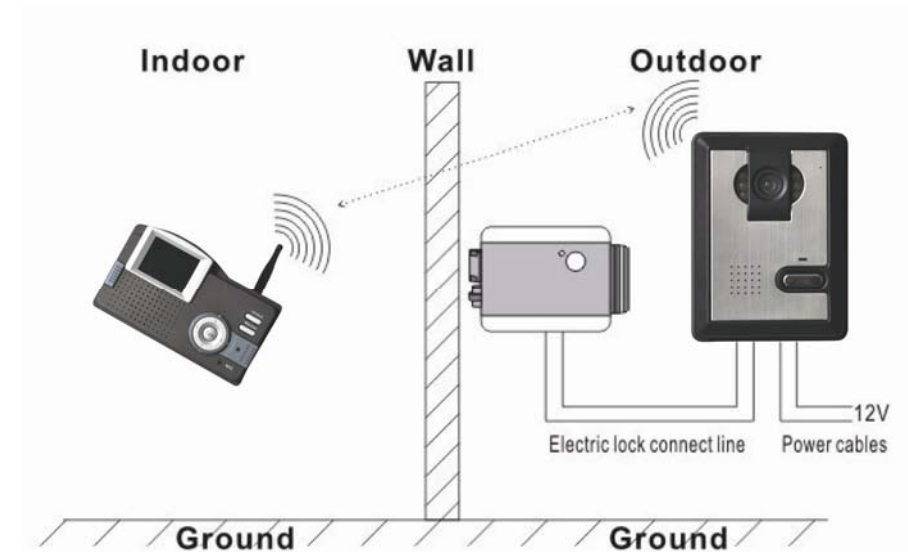
##### 3) Instruction for taking photos :

When it's standby, pressing Monitor for 3 seconds to turn up the photo mode ; pressing Talk to take photos of outdoor , press 1 time for 1 photo, to look through all of the photos kept by up,down,left and right

buttons.Press the monitor again to delete all of the photos and there can keep 200 pcs pictures at most. One more press on Talk to exit the browse mode and going into active image mode ,then press the Monitor for 3 seconds can exit the photo mode.

#### 5. Installation instructions

The monitor controls the camera to unlock as follow:



After pressing the Unlock key of the monitor, it transfers the signal of unlock to the camera in the way of wireless, and the E-lock will be opened (electronic lock connected with the camera by electronic cable)